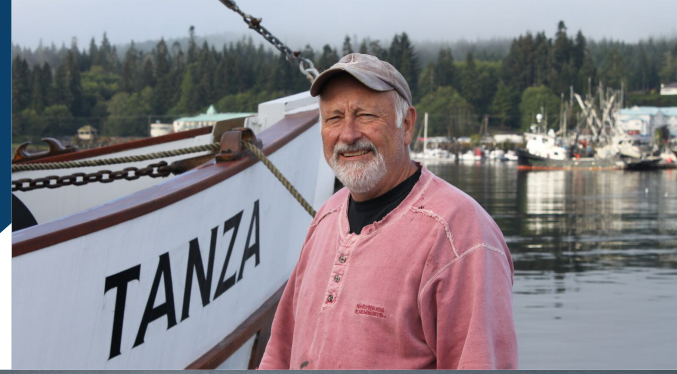


# FLAT OUT FACTS: WILD PACIFIC HALIBUT

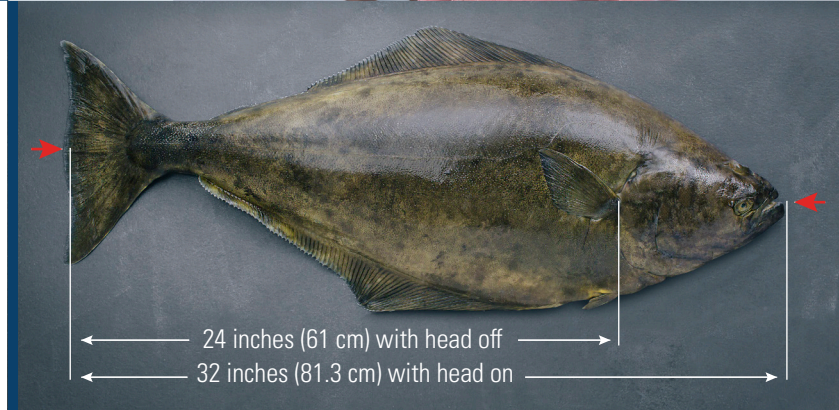
## BIOLOGY & LIFE CYCLE



## SIZE & WEIGHT

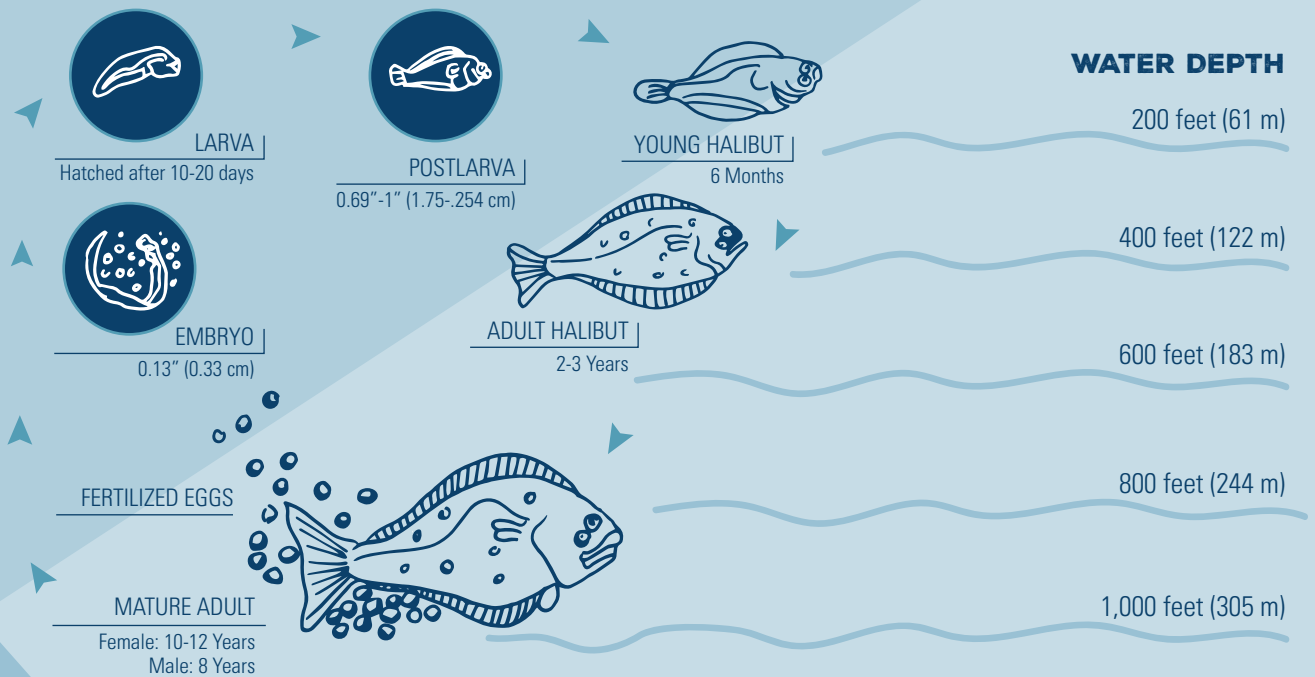
- Wild Pacific halibut are one of the largest flatfish
- Can grow to a maximum length of about 2.5 metres (8 feet)
- Can weigh up to 227 kilograms (500 pounds) of round weight (*whole*), which translates into 170 kilograms (375 pounds) of net dressed weight\* (*eviscerated, head-off*)

\*NOTE: Net dressed weight is the standard reporting practice for wild Pacific halibut.



**LEGAL COMMERCIAL SIZE:** Wild Pacific halibut must be larger than the regulated minimum size in order to be harvested by commercial fishermen.

## LIFE CYCLE



### GENUS AND SPECIES:

*Hippoglossus stenolepis*

### FAMILY:

Pleuronectidae

### HABITAT:

- Found along the continental shelf in the North Pacific Ocean and Bering Sea, and as far west as Japan and Russia
- Typically dwell at ocean depths between 75 and 550 metres (250 and 1,800 feet)
- Can dwell as deep as 1,220 metres (4,000 feet)

### AGE:

- Females live longer than males
- Oldest recorded female in Canada was 42 years old, and the oldest male was 27 years old